

METHANE

Just a short forum where Nostradamus mentions GAS and METHANE in the hidden texts. Often it is not the main genre (in this case GAS) but what accompanies it that counts.

4 3 4 Proche du mont ou` Sagonte s'assied

AS SET H CHORE
 SPIDERS STEADINESS
 PERIODS NOT DISEASES USA (but)
 SEAS MOUNTED CORE MOUND
 GAS OUT (methane)

Near the mountain seat of Segunto (named in other lines as safe)

AS: god of the aettir ...CHORE: duty SET: can mean Easter
 Relentless insectoides/mantids
 AT THE TIME THAT THE PLAGUES HAVE NOT YET ARRIVED
 H: from Aldebaran. In Taurus... or CHAOS
 CORE: the stargate MOUND: the pyramids

4 3 4 Proche du mont ou` Sagonte s'assied

(AS) or SPIDERS CHORE SET EON PERIOD (age) con others
 TORCH MOUND (Giza) or Mound torch USA
 AS or (SPIDERS) STEADINESS
 SEAS GAS OUT (methane)
 DISEASES – seas MOUNTED USA
 Co. (corporate) shoot CERN (in) throne (Libra/October)

Near the mountain where Sagonte = ON GATES sit = Giza pyramid

ON is the ancient name for Egypt plus it means the Oannes
 ATONE = (Libra) [in] G (is Monday and the period Sept 30 – Oct 27)
 TORCH: there is archaeological evidence that the Middle East and Harappa once suffered radioactive effects, possibly by warfare
 MOUND is either a planetoid or the Giza plateau
 AS is god of the Aettir/Aesir (could be god of Sirius/AS.SYRIA)
 SPIDERS are from Antares/Ophiucus – possibly the Mantis

Rearranging the letters (also known as 'codes within codes') of 4 3 4 'SAGONTE' gives:

NOTE GAS (methane)
 ONE STAG (Orion) SAT (stage gate)
 GONE – AET (As) SONG where AS = Asia?
 ON (Anun.nakim) E.T GAS (chemtrails)
 E.T A (winter solstice) SONG (verses in quatrains or AUM of As)
 SEA TO MOUNT USA NG (Reed Oct 28 – Nov 24) = great flooding
 O. (Andromeda council) AGENTS EAT (cannibals, false rapture) NG (in Scorpio) [to] OS (Capricorn)

4 67 1 L'an que Saturne et Mars esgaux combust

METER NATURES GAS STREAMS COMBUST
 U. SAGE UUATERS UUAX Q
 LAST MENSTRUATE ASSUAGER
 ALAN'S MOB COMB UX QUEEN, TURNS
 NUMERATE MASTERS ~ SATE LUST URN (age)

MEASURE METHANE ...BURNS

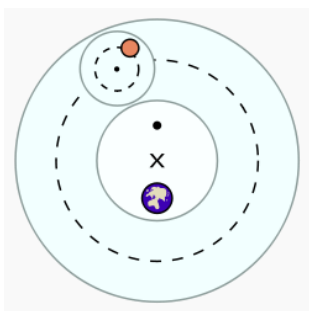
U = astronomical SAGE: Wormwood ...an asteroid, any asteroid
 UUATERS UUAX: grow Q: "orbit" travel round the world
 Alan's mob: decoders COMB the texts for topics. UX: astronomy
 QUEEN is Cassiopeia, hybrid breeders TURN topic is the poles shift
 The NUMERATORS would be the Anun.nakim URN: Aquarius age

4 67 1 L'an que Saturne et Mars esgaux combust

NATURES METEORS STREAM
 NUMERATE UUATERS USAGES
 ASSUAGE R (Draco) SATE LUST (false rapture)
 GAS UUAX ~ COMBUSTS
 RUNE MASTERS EQUANT URN UX
 LAST MENSTRUATE ~ BOMB – M CLAN Q

*The year that Saturn and Mars are equal fiery: August 2016**

Or our own view as Earth moves to a new orbit
 GAS UUAX: the atmosphere gases – methane grows and BURNS
 Set off by meteorites. Also to measure the use of water
 UX means use the astronomical term for URN – the age of Aquarius
 RUNE MASTERS are either AS the god of the Aettir or the Anu
 BOMB creates infertility. M: Orion Q orbit
 *but allow for 'pole rotation' and the new orbit of Earth



In 10 89 2 & 4 67 1 EQUANT



The basic elements of Ptolemaic astronomy, showing a planet on an epicycle with a deferent and an equant point.

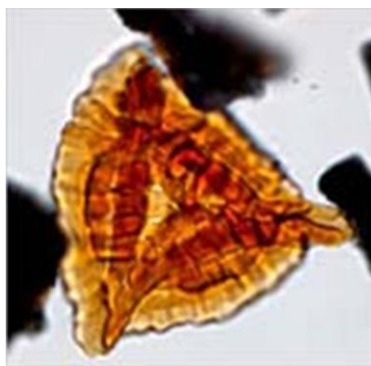
This can be seen in the four crop circles published in the CROP CIRCLES forum

Methane

July 27, 2011 - Did Half the Triassic World Die from A Huge Methane Eruption?

Could it happen again in this warming 21st Century?

Kyrtonisporis speciosus, a Triassic period fossil with carbon isotopes that help date Triassic extinctions 201 million years ago. Image in 072211 Science/AAAS.



201 million years ago toward the end of the Triassic period more than 50% of all marine and terrestrial Earth marine life - including insects - died off. New data reported in the July 22, 2011, journal *Science* by Micha Ruhl, Ph.D., and colleagues from the University of Copenhagen's Nordic Center for Earth Evolution suggest that the extinctions occurred in only 10,000 to 20,000 years. The scientists studied carbon isotopes of sediments and fossils and found at least 12,000 gigatons of **methane were suddenly released** from the seafloor into the atmosphere during the extinctions. **“Methane is only stable under certain¹ temperatures. If it gets warm, it is released,”** Dr. Ruhl reports. The cause of the huge and sudden methane release could have been persistent volcanoes that released CO2 into the atmosphere and warmed up global temperatures. Then because methane is a much stronger greenhouse gas than CO2, the methane released from warming waters could have caused the very rapid climate change that killed off so much Earth life. Could seafloor methane erupt again as climate warms in this 21st Century? See *Science Magazine*. Earthfiles.com

¹ Nostradamus has suggested that solar flares are “culpable” for the consequent vulcanism. While methane may not be directly involved in the very sudden freezing of mammoth in Siberia, and the green vetches under the Andes glaciers 13,000 years ago; it may well have been the catalyst. One other answer for sudden freezing such as in the *DAY AFTER TOMORROW* super-canes would be a polar shift.

4 67 1 L'an que Saturne et Mars esgaux combuste

METER NATURES STREAMS GAS COMBUST

U. SAGE TURNS (Earth) UUATERS UUAX Q...

LAST MENSTRUATE ASSUAGER

(the Cassop. Hybrid breeding program)

UX QUEEN COMB ALAN'S MOB

MASTERS ST. NUMERATE ~ (to) SATURN last turn (orbit) ULE

U.N. RUE MAN (Orion) STARS

re N (Eridu) AUM MARE = Mare July 8 – August 4

MEASURE METHANE ...BURNS

U = astronomical SAGE: Wormwood any asteroid - causes UUATERS UUAX: grow Q: “orbit” travel round the world CAUSES the Earth to TURN

UX: astronomy QUEEN is Cassiopeia; COMBS Alan's mob: decoders.

SAINTS DO THE MATHS TO MOVE EARTH TO SATURN

The NUMERATORS would be the Anun.nakim/Oannes

URN: in or from Aquarius

8 29 2 Par tremblant terre et deluge fendu

BLAMED Temperature Embattle ~ ENGULF PART

NEED UPEND, MARBLE

LAMB RELETTERED ~ RAPTURE ENTREATER

split by earthquake and by flood

UPEND the Earth MARBLE: ascending – spread out Methane BLAMED raising the temperature (but it is solar flares)

LAMB (Jesus) RELETTERED – IN THE NAME OF JESUS = Sirius and the false rapture (see the FALSE RAPTURE forum)

8 80 4 DE FRAYEUR CRAINTE NE VERRA NUL QUE BOGE

UN NEVER CERTAIN GEBO EQUAL revenue if traced after unreceived

FEARED REVERENT RARE RAY INTERVENE

RECUR IN RAY EVENT YEAR (C.M.E.)

AREFY VENETIAN BOG LUNA fierce turn evade furnace I, everted

FIERCE ADVENTURE furnace derive e.t., it veered (Earth)

TERRIFIED BY FEAR, NONE WILL BE SEEN TO MOVE

revenue if traced, the real whereabouts of tax money is traced

GEBO means partnership – The Pact

This would release methane

AREFY to dry out LUNA March 30

Could be “it veered furnace” but the words FIERCE ADVENTURE would not apply so much in that case, but would do so if the Earth “veered”

9 57 2 Et cherchera loi changeant d'Anatheme

HC ARCHER (decoder) MEET HER CLEAR ANATHEMAE

REACH HALCYON ROYAL THEME (the moving of Earth)

HAN (As) ET – CLOCHE RAY DAN A (cloche – hat shaped ufo)

ATHENA COCHLEARY*

HEAT CHANGE HOLE CAR –

METHANATED, METHANE H ERA (ignites - chaos)

HOLE could be “whole” – everything or outer space

D'an = puns. “Of Anu” and changing “of the years” (ages) ‘in Scorpio

DAN is Scorpio A is Fir tree day December 21/22

Cochleary Resembling a snail-shell, spiral, winding in*

HERA the chaotic orbit asteroid plus another asteroid

ATHENA key word for asteroid – HEAT CHANGE = ice age

CAR: Capricorn first decan in which sits the winter solstice

d'Anatheme: NAME DEATH AMEN: HATED MEAN DEATH HEATED

NAMED: HEAT, MAN need hat A.M. DAN, A solar flare THEME

A is also Saturday and MAN means Orion

*SEE THE CROP CIRCLES SHOWING THIS

9 57 2 *Et cherchera loi changeant d'Anatheme*
MEET ARCH METHANE LECHER DAN
COCHLEARY HERA METHANATED A
ATHENA HOLE CHANGE HEAT CAR –
CHEER ARCHER AGENT
HC HER CLEAR ANATHEME –
REACH ROYAL HALCYON THEME

ARCH METHANE LECHER an alien
MEET him in Scorpio

10 5 2 *Neuf Arriens Lisbons et Portugues*
UNFAIRER NON RESISTIBLE OILS –
If (is) TRUE, GAS BORN ~ UNSAFER AIR B R
POET PORT FAR: LINES PORTENT URFA REFRAIN
LINES UNSAFE ~ BESOIN USE BENOIST

POET: is Nostradamus PORT FAR into the future
NON RESISTABLE = radioactive oil on the ocean floors

Nine Aryans, (Ennead) Lisbons and the Portuguese
METHANE (or chemtrails) BORN: carried
B is a Thursday R is Celt Nov 25 – Dec 22
BESOIN (the need) USE BENOIST (publisher) because he agreed to
publish all the spelling with their “errors” in the quatrains
PORTENT URSA REFRAIN – Ursa is Russia

Methane and Climate Change: From the Amazon to the Gulf of Mexico

(20/6/2010) In surveying the environmental damage unleashed from the BP oil spill, could we be missing the 800-pound gorilla in the closet? While oil poses undeniable ecological risks, methane (CH4) could prove daunting as well. As it turns out, crude which is destroying the Gulf of Mexico contains about 40 percent methane which may suffocate marine life and create vast “dead zones” where oxygen becomes so depleted that nothing is allowed to live.

BP's Gulf Oil Disaster Reaching Record-Breaking 140 Million Gallons Since April 22 2010, with Lots of Methane.

July 1, 2010 Linda Moulton-Howe Earthfiles.com

“The levels of methane in the deep Gulf waters that we’re seeing are unbelievably high. I’ve never seen levels like this in the ocean before.”

- John Kessler, Ph.D., Chemical Oceanographer, Texas A & M Univ.

According to sources who wish to remain anonymous – the media has been clamped regarding the ongoing BP oil disaster. The flow is still unplugged to this day. This mixes with the radioactive oceans from Japan and travels the world with the ocean currents.

Note from Helen C Parks:

If this methane ignites, the actual atmosphere will go up in flames in the area

In the work I am doing on the Hidden Texts of Nostradamus, he says for the decoder/s to work on the FIRE chapter next, and that 2012 will be the “heating year”.

He already told us that 2011 would be the year of “irate seas” and flooding.

POST SCRIPT:

From Dannemarc, the Prince of Dark Men of Sirius to the comprehension that this ‘dark’ means “negro”...to the discovery that Quetzal.coatl and 110 other names all mean the Anun.nakim or those from Erid.anus...comes the realization that the OLMEC were the Prince of Dark Men. As far as the mystery of “where did they go?” Where did the Olmec go, where did the Maya go? The answer lies in the technological advances that came with the Olmec and the “plumed Asp”. The parallel sciences of the ancient Egyptians... The Kore-Core of the underworld
The stage gate ~ stargate