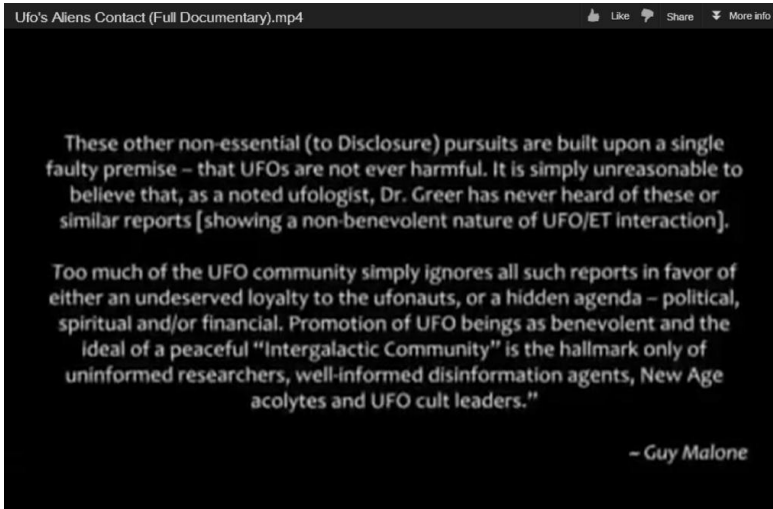
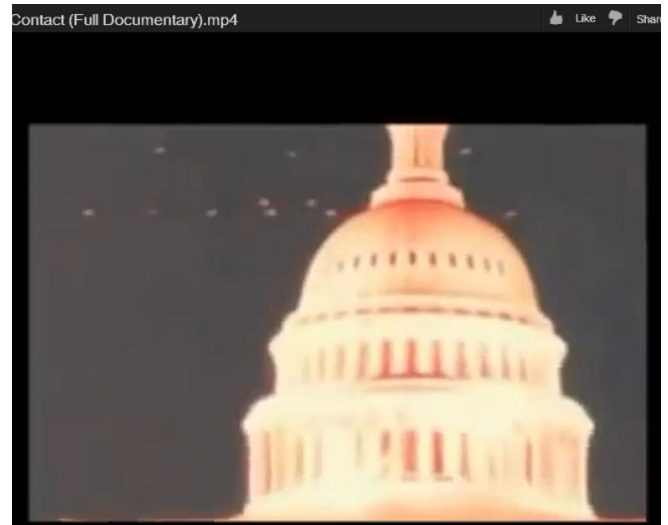
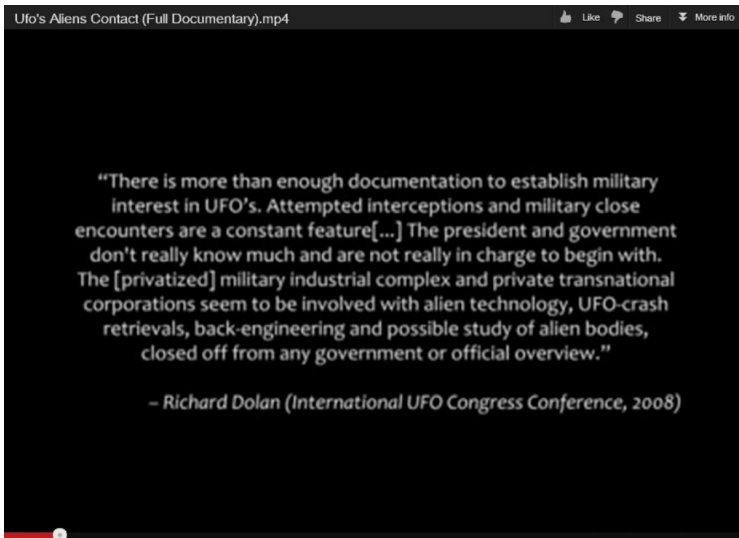
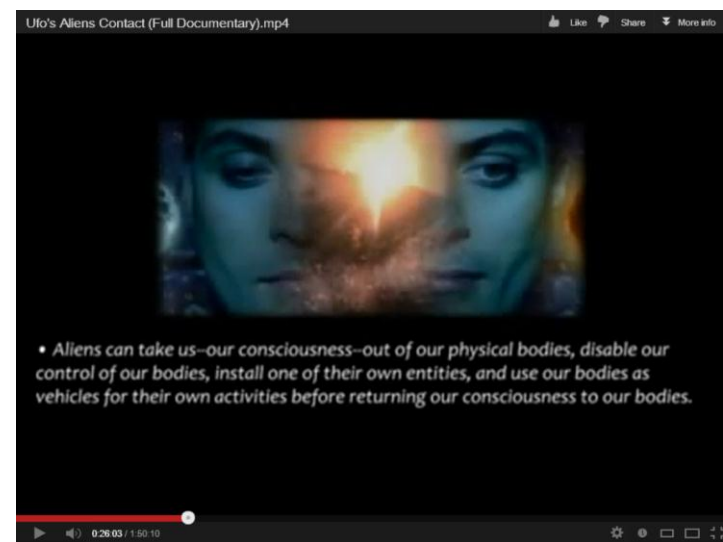
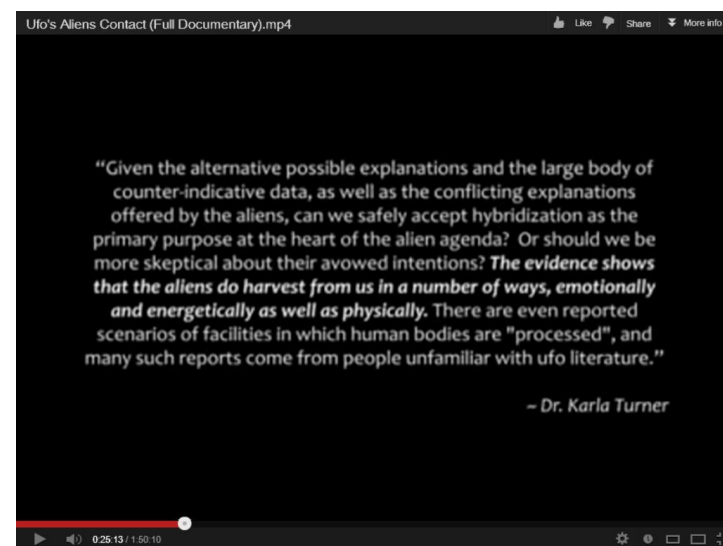
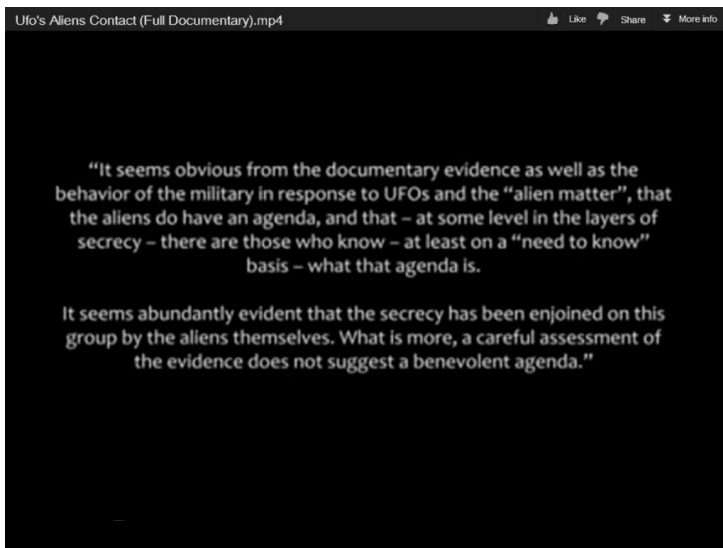
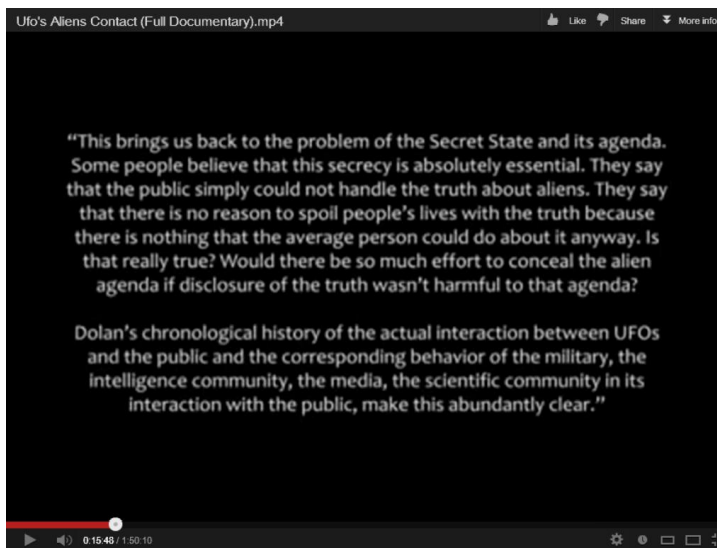
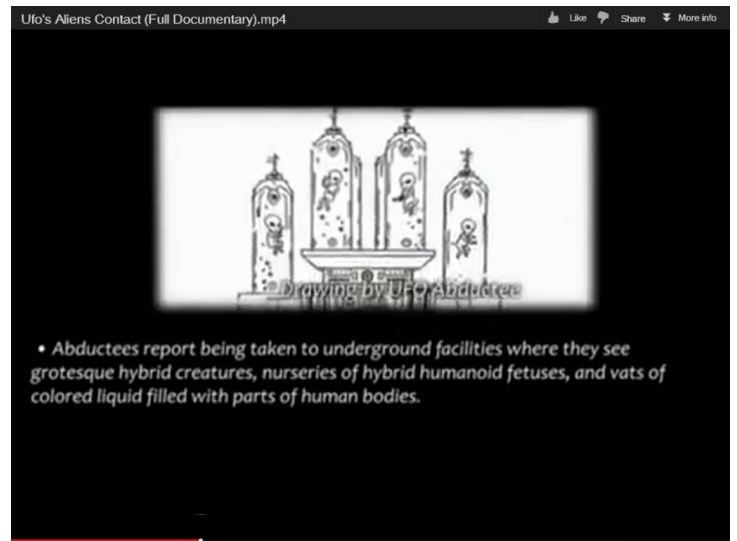
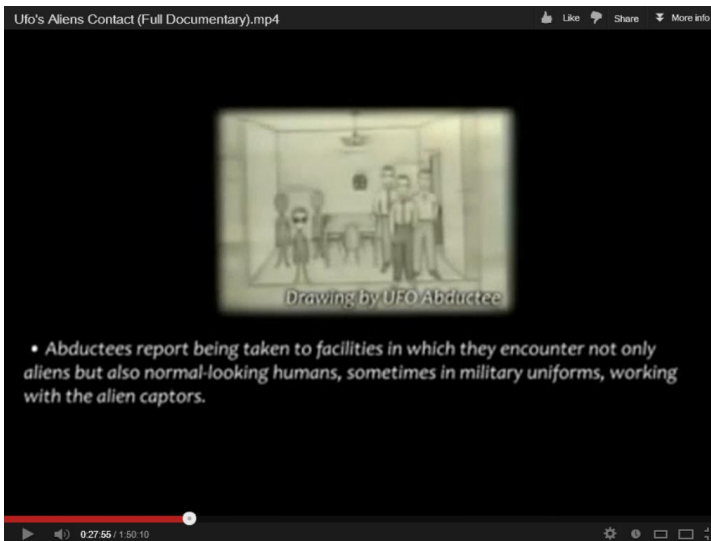
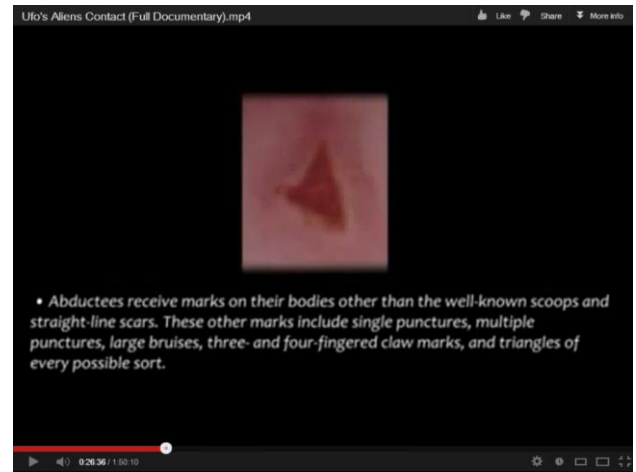


OMISSIONS EXCEPTED IN THIS VIDEO REGARDING DISCLOSURE: THE PUBLIC NEED TO KNOW MORE THAN THIS:

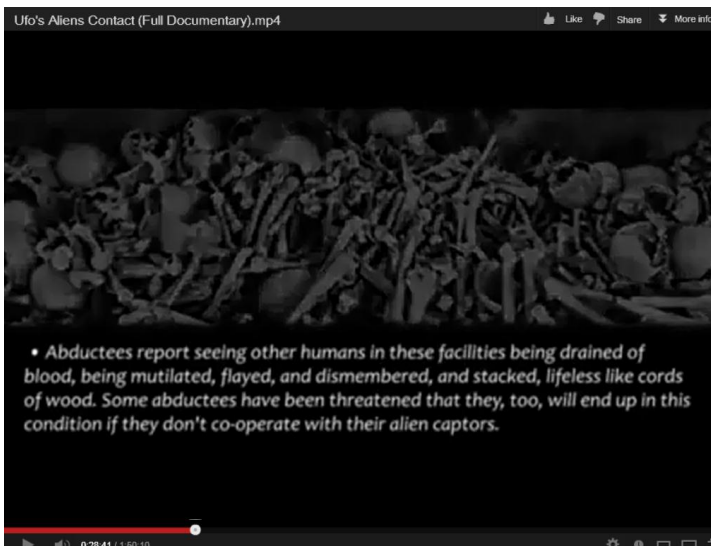
- 1) The assumption here is that there is one set of greys... by going to the pdf forum *QURAN QUARAN* the Book of Other Worlders taken from the Hidden Texts of Nostradamus at the top of page 3 on the web site, one will see that there are at a minimum 33 different types of Greys with all together 84 Other Worlders described, at www.hiddentextofnostradamus.com
- 2) The omission here is that of those Other Worlders which use *time portals*. Completely writing off this idea with the words regarding intra-planetary travel "is not possible", yet Earth has at least 12 stage gates. One is under Giza and begs the question why does the American military have a huge wall constructed there?
- 3) From <http://www.youtube.com/watch?v=b-LSVIEPuo0> 1 hour 50 min







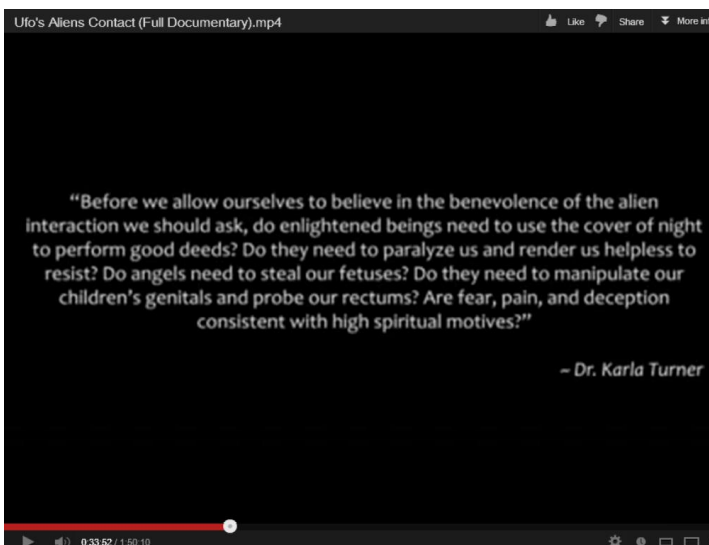
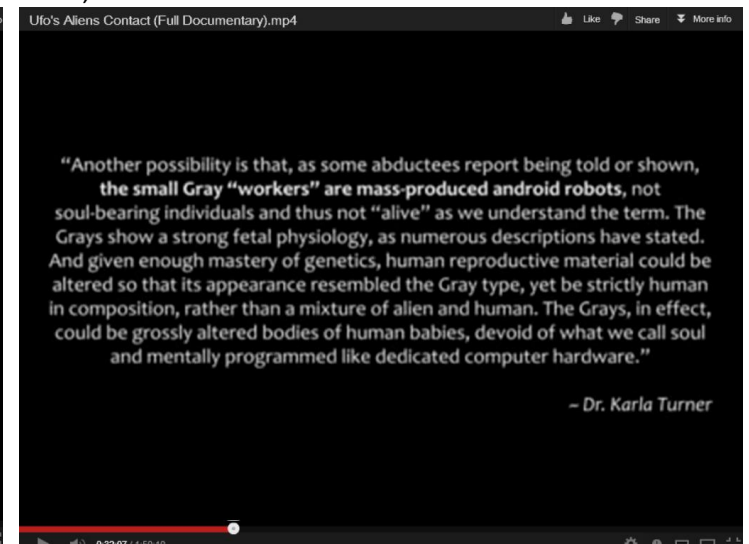
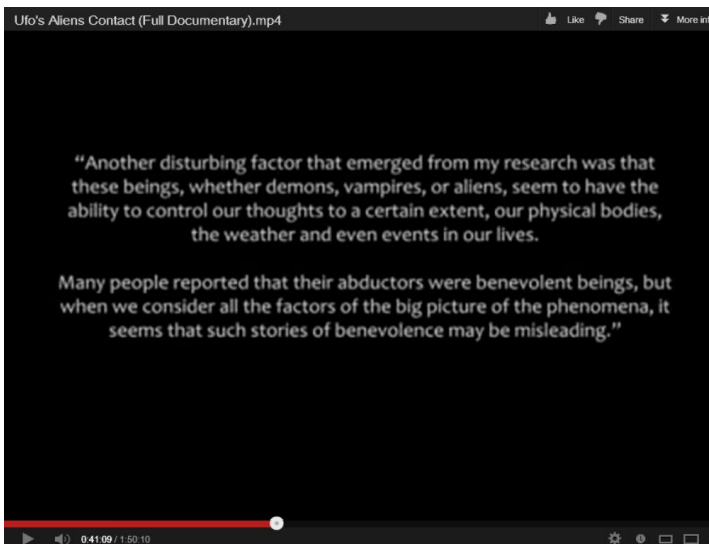
BOTH ABOVE EXPERIENCES WERE MADE BY DIFFERENT ABDUCTEES, AND BOTH WERE BY THOSE FROM CASSIOPEIA –
 - AS STATED TO THEM WHEN THEY ASKED AND AS STATED BY NOSTRADAMUS IN THE HIDDEN TEXTS



THE PROBLEM WITH THE OTHER WORLDERS WE ENCOUNTER IS THEIR CHAMELEON ABILITIES TO CHANGE SHAPE, AND THEIR APPARENT INABILITY TO SPEAK THE TRUTH. FOR INSTANCE WHEN ONE ABDUCTEE WAS PRAYING TO GOD – THE GREY SAID TO HER: “WHY DO YOU WASTE YOUR TIME SEEKING GOD UP HERE? THERE IS NO ONE BUT US UP HERE”.



THE REPITOLOID SEEM TO BE THE PROLIFIC SHAPE SHIFTERS, SOMETIMES THE ONLY WAY WE MAY BE ABLE TO DISCERN THE REAL THING IS BY THE CRAFT THEY USE. THESE CRAFT HAVE MANY DIFFERENT DESCRIPTIONS BY NOSTRADAMUS THE "ELDER" E.B.E.N. HAVE EGG SHAPED CRAFT WITH THREE LEGS, AND ARE HERE TO ASSIST HUMANITY IF WE SO WISH



ON THE RIGHT IS ONE OF THE "UNHOLY SIX" – A CUBE CRAFT OF THE ANU NEAR OUR SUN RIGHT NOW JANUARY 2013



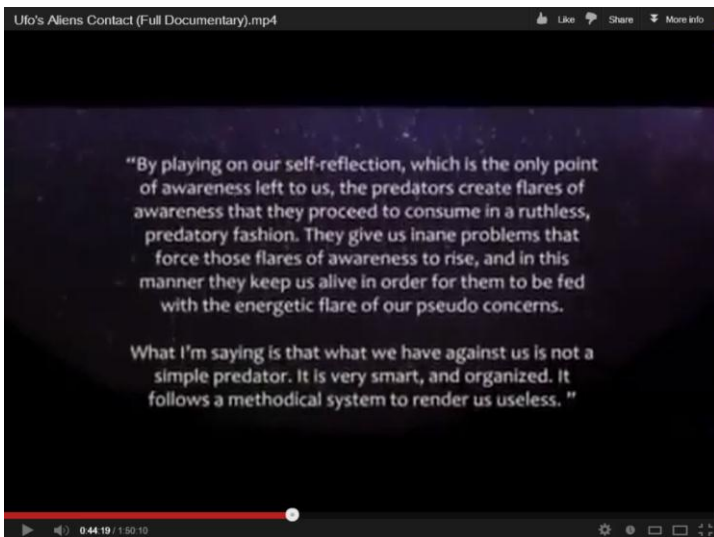
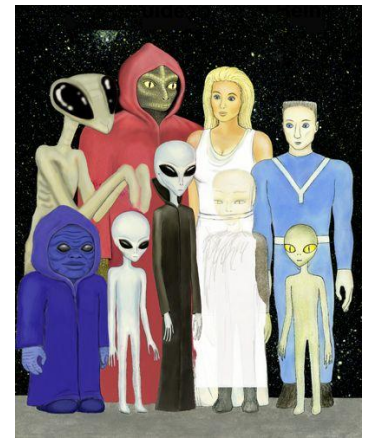
THIS IS A SCENE FROM WHITLEY STRIEBER'S 'COMMUNION' in which was shown the ugly little hooded guys dancing and singing with Strieber. These same hood wearing critters are shown in one of David Huggins paintings, here and he was abducted by those from Cassiopeia. The puzzle is that there are a large number of Other Worlders standing in that same painting –

Strieber stated later that there was much placed in the movie which he was not pleased by. It is not known if this detail is one of them. In the hidden texts Nostradamus has the “cagoule” dwarfs being sourced from Ursa Major and involved in cattle mutilation using YNIM – division of flesh at the molecular level using thermal ray, the YINM

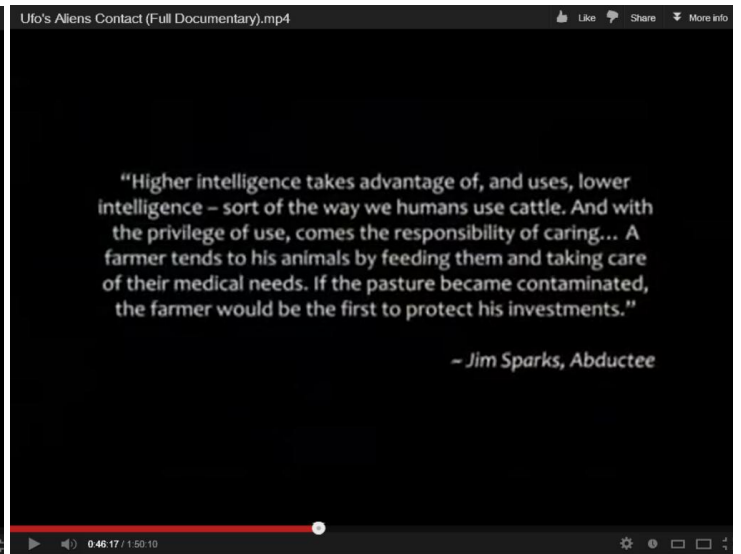


The illustration on the right is probably the most telling of all. We must all be grateful to David Huggins for the detail in his pictures. What he has painted on the right tells us that the hooded dwarf (Whitley Strieber's) –the same which were seen spreading green mist prior to the plagues, is involved with the Cassiopeians, who are themselves in league with the agenda of the Andromeda Council (3 25 4). The Mantis(Lobstermen)has been seen on a wall glyph – twice – in a submissive posture to the giants Enki or Enlil. There are four different greys, one of which is a see thru **Elder**. A hooded reptilian, a tall blond (synthetic?) woman and a hybrid man in blue. **Who is in charge?**

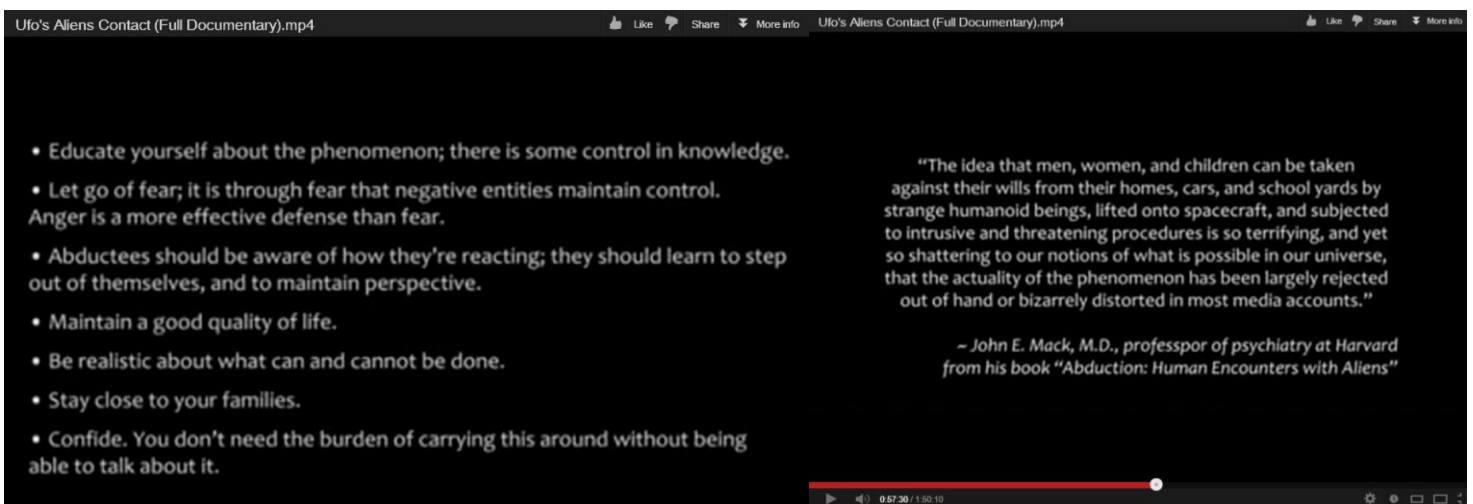
The illustration on the left has a hint we should take note of. There are two suns. One other painting showed one black sun. Would that be the “sack cloth” of darkness in the Bible?

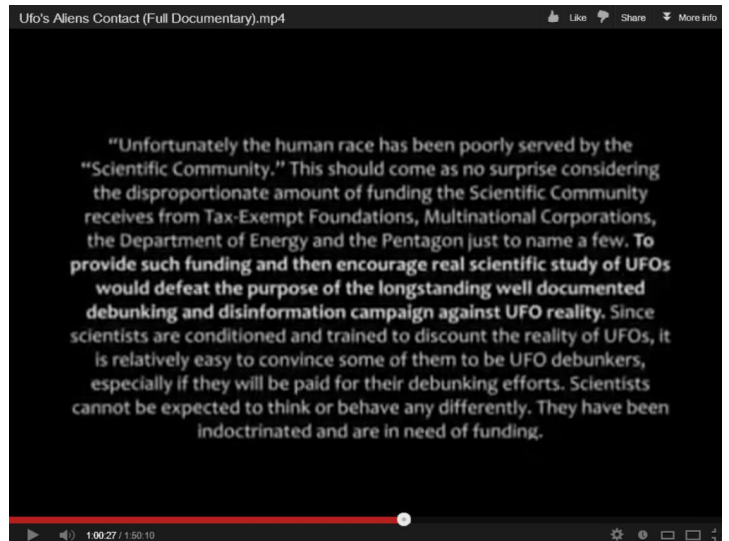


BY CARLOS CASTANEDA

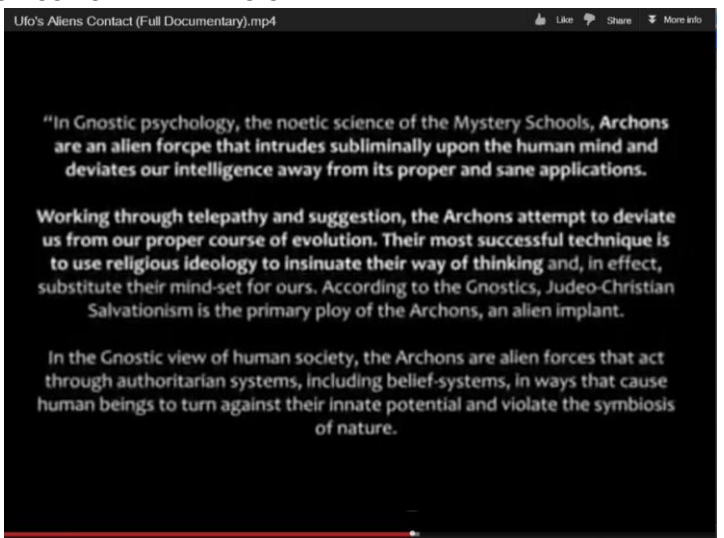
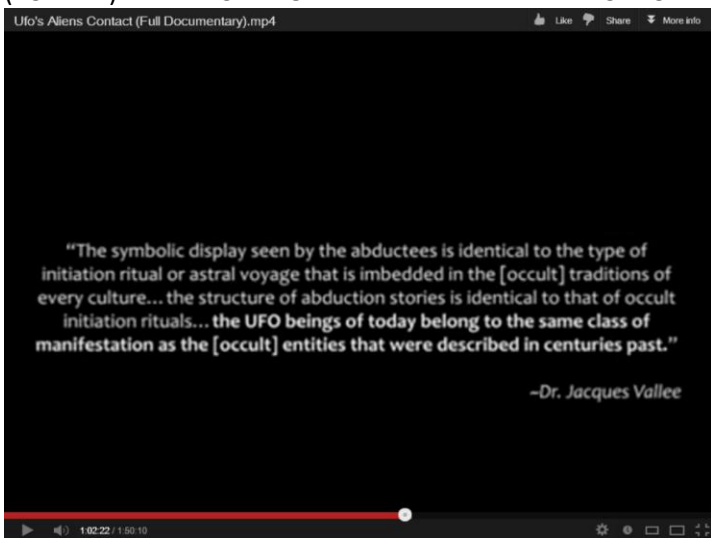


NOSTRADAMUS STATES VERY CLEARLY THAT THEY "LIE", THAT THEY ARE THE MASTERS OF DECEPTION. THESE ARE GREYS FROM ZETA, FROM 45,000 YEARS IN THE FUTURE THERE ARE EXCEPTIONS TO THIS DICTION, SUCH AS THOSE WHICH ASSISTED NOSTRADAMUS IN THE STAGE GATE TIME PORTAL, THE HE ROD J-RODS... BASED GLIESE 876c AND FROM 52,000 YEARS IN OUR FUTURE. THEY USE THE PREFIX "CHE" TO THEIR NAMES THE SAME WHICH DR DAN BURISCH WAS TREATING AFTER ROSWELL.



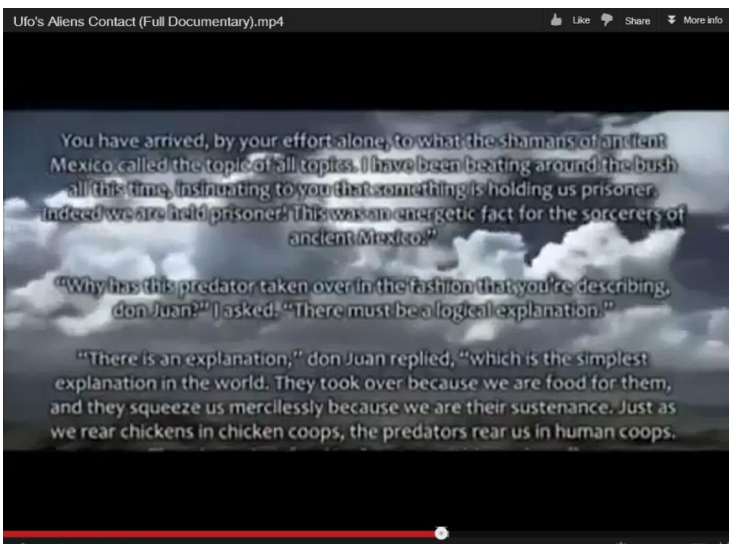
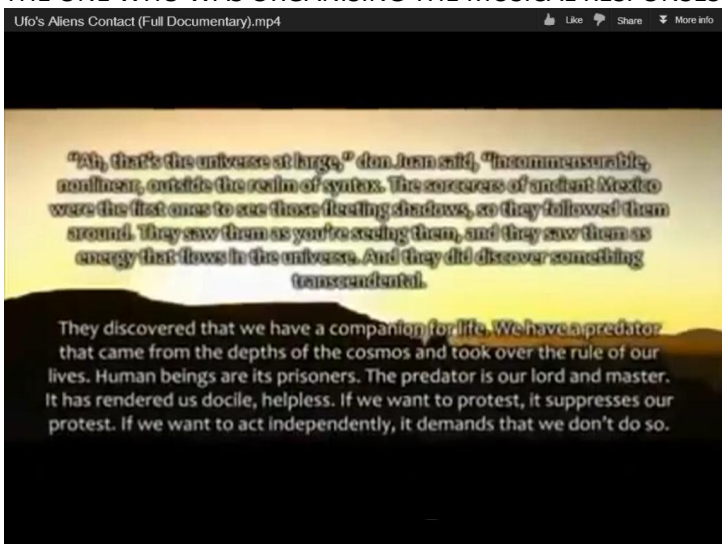


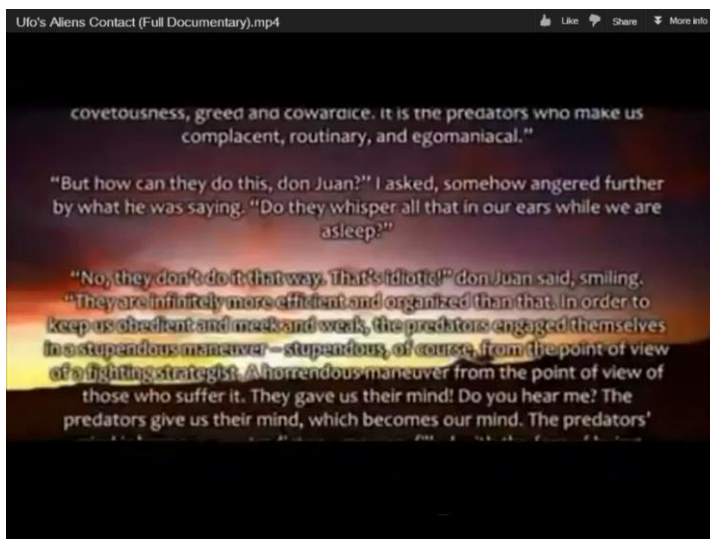
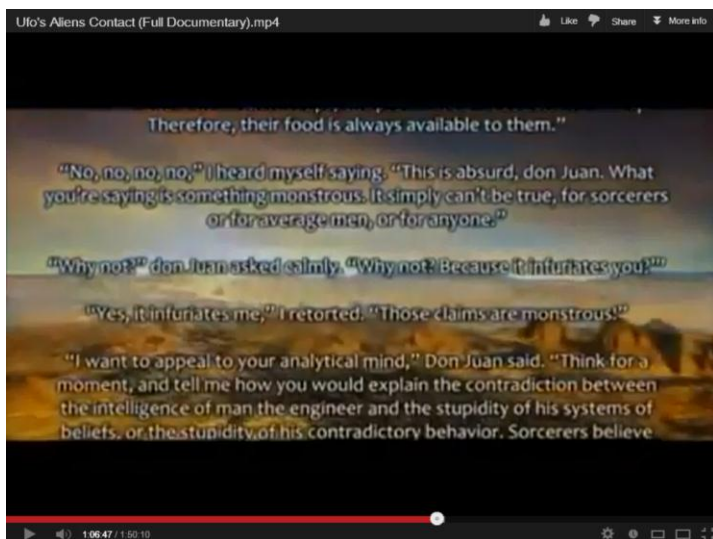
CONTACT HAS ALREADY BEEN MADE BY CROP CIRCLES – ACCORDING TO NOSTRADAMUS, BY THE ESHDAR COUNCIL (ASHTAR) – ELDERS ... NOT AFFILIATED WITH WEB SITES WHICH USE CHANNELLERS UNDER THAT NAME



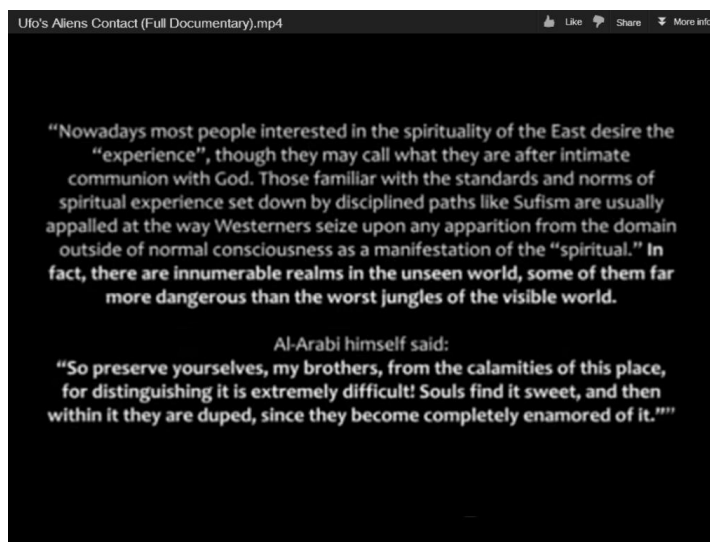
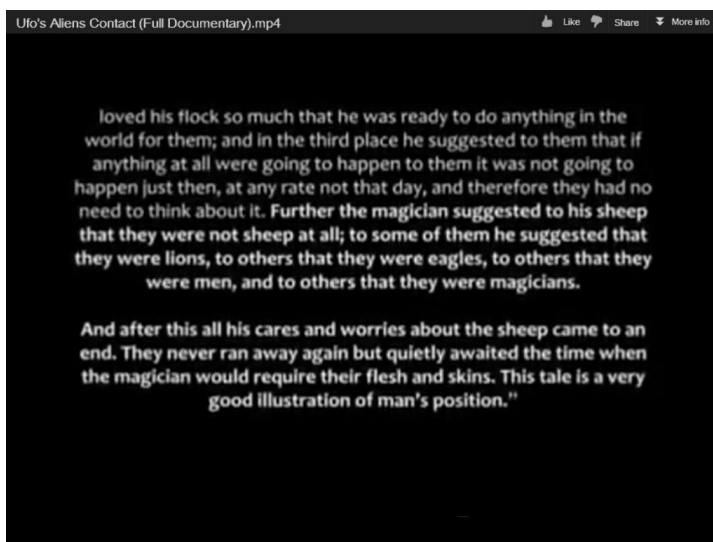
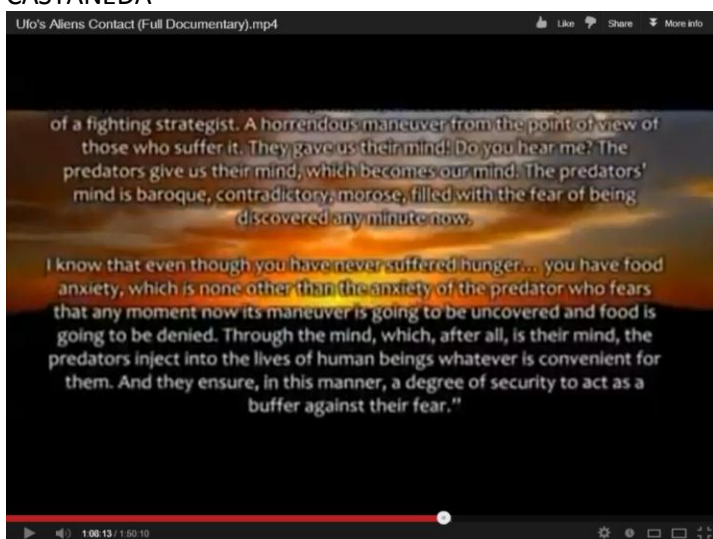
JACQUES VALLEE IS THE REAL LIFE SCIENTIST, ACTOR/WHO PLAYED IN CLOSE ENCOUNTERS OF THE 3RD KIND – THE ONE WHO WAS ORGANISING THE MUSICAL RESPONSES.

JOHN LASH

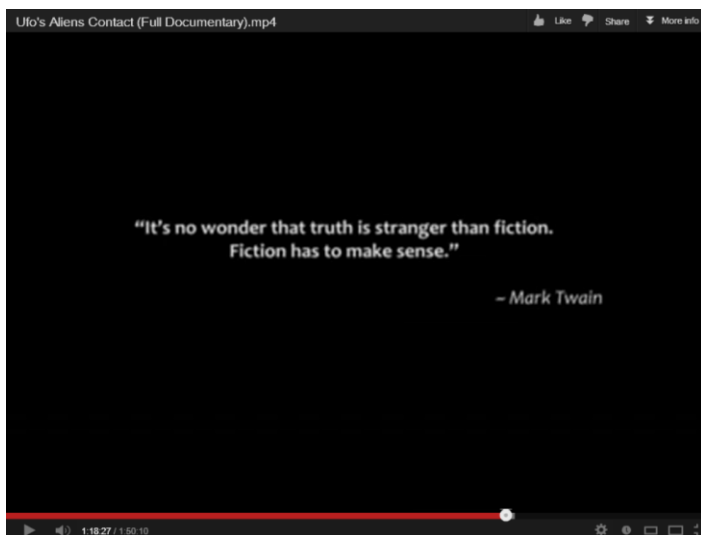
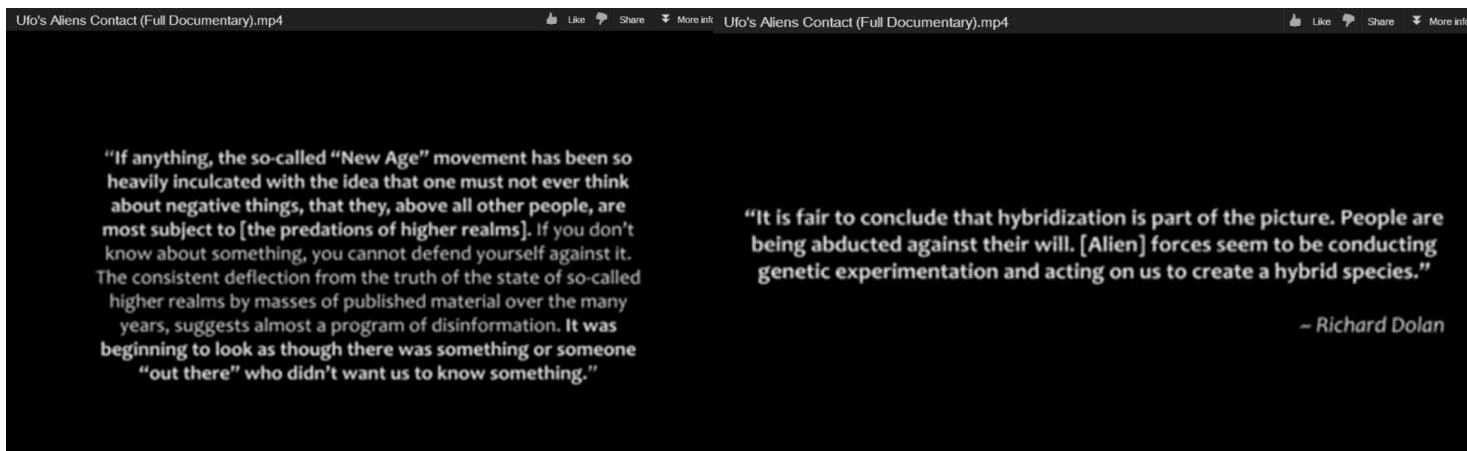




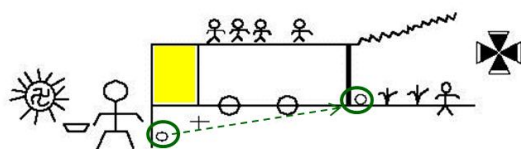
CASTANEDA



SUFI



IN "ADDITIONAL TO THE HOPI AND NOSTRADAMUS" THE ABOVE GLYPH WAS EXPLAINED;
 BUT I OMITTED WHAT THE CROSS INDICATES – BECAUSE I DID NOT KNOW AT THE TIME.
 THE HOPI BELIEVE IT IS THOSE FROM ARCTURUS IN BOÖTES WHO GIVE THEM THE MESSAGES...
 THIS IS THE CROSS WHICH APPEARS ON THE BREASTPLATE OF EN.LIL – THE CROSS OF THE ANUN.NAKIM
 THE "ANAKIM" OF THE BIBLE. EN.LIL MEANS "LORD OF THE AIR" THIS CROSS BECAME THE EMBLEM OF
 THE TEMPLARS, THE MALTESE CROSS – THE PHEON OF THE YHWH, THE CHIEF PILOT OF A TERRA PROJECT.
 SO WE SEE A SUN WITH SOLAR FLARES, A CUP WHICH MEANS FROM PERSEUS, ALSO KNOWN AS THE CUP OF
 DESOLATION, THE WRATHFUL CUP. ALGOL IN PERSEUS IS KNOWN AS ALGOL THE UNFORTUNATE AND THE CUP
 BEARER IS BOTH AQUARIUS AND GANYMEDE. THE CUP IS THE DICE CUP OF PERSEUS, THE GAMBLER, THE RED
 OF THE EYE OF ALGOL/MEDUSA IN LATE ARIES.. THE CUP IS THE GRAYLE, (THE GRAIL: THE TIME PORTAL).
 A GIANT OF MANKIND, WHICH COULD MEAN SIMPLY THE GIANTS, THE ANU - THE EARTH,
 A "RISE" OF THE GOLDEN RATIO - PLUS TWO SUNS. THE PLUS SIGN IS THE DISTANCE EARTH IS MOVED
 SEE THE EARTH HAS BEEN MOVED FROM THE ORBIT NEAR THE ORIGINAL SUN? THE THICK BLACK LINE COULD
 MEAN THAT EARTH BECOMES THE FIRST OF THE NEW INNER PLANETS TO OUR BRONZE SUN.
 THE FOUR HUMANS (THREE PLUS ONE) ARE IN A PARALLEL UNIVERSE. IN SPACE
 THIS ENTIRE SCENE IS SAYING "A NEW EARTH AND A NEW HEAVEN"



THE SUN ON THE LEFT WITH SOLAR FLARES IS THE REASON
 THE EARTH (GREEN CIRCLE) IS TO BE MOVED TO ANOTHER
 GOLDEN RATIO ORBIT. THE TWO CIRCLES WHICH LOOK
 LIKE WHEELS ARE TWO NEW SUNS. WHO EVER DREW THIS
 ONE HAS THE GOLDEN RATIO FACING THE WRONG WAY



THIS WALL DEPICTION OF A GREY IS A MUMMY BURIED IN THE PRINCESS' TOMB OF SENUSRET II. ON THE SKULL IT DISPLAYS A NON HUMAN VERTICAL SAGITTAL SUTURE WHICH IS SEALED AND MATURE, SO IT IS NOT A FOETUS (BUT THERE IS A CONDITION WHICH THIS EARLY SEAL OCCURS AS A DEFECT IN BABIES) THIS IS WHAT CERTAIN GREYS HAVE BECAUSE THEY HAVE TWO BRAINS. NOSTRADAMUS SPEAKS OF THIS IN THE HIDDEN TEXTS. YOU WILL SEE DOCUMENTARIES WHERE THIS MUMMY IS USED AS AN EXAMPLE OF A FOETUS OF KING TUT.ANKH.AMUN, BUT SINCE IT MEASURES OVER ONE METER LONG, IT IS RATHER A LARGE FOETUS! PLUS THE TWO LITTLE FOETUSES ARE/WERE IN JARS

THE TWO BURIAL JARS OF KING TUT'S DAUGHTERS
AS CATALOGUED BY CARTER

THE GENDER OF THE GREY'S MUMMY SEEMS TO BE MALE
ALTHOUGH THERE ARE CASES OF HERMAPHRODITIC
CONFUSION (A.I.S) IN HUMAN BABIES



The body of a perfectly preserved, carefully mummified alien was found buried in an ancient pyramid.

A mysterious creature from between 150 and 160 centimeters was found by an archaeologist near Lahun when exploring a small pyramid near the Dynasty doceaba of Senusret II.

However, this fact was not revealed immediately.

"The mummy of what appears to be an alien, dates back more than 2,000 years and it seems it would be a humanoid" said a source at the Egyptian Antiquities who provided details and photographs of the find but did so under conditions of anonymity."

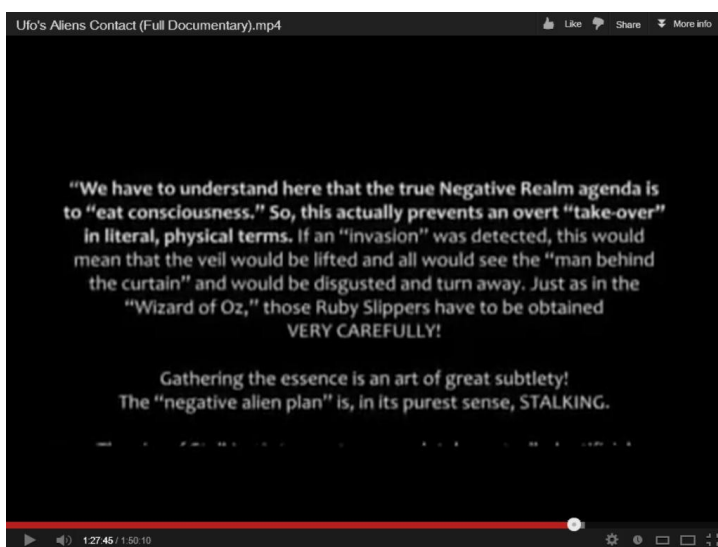
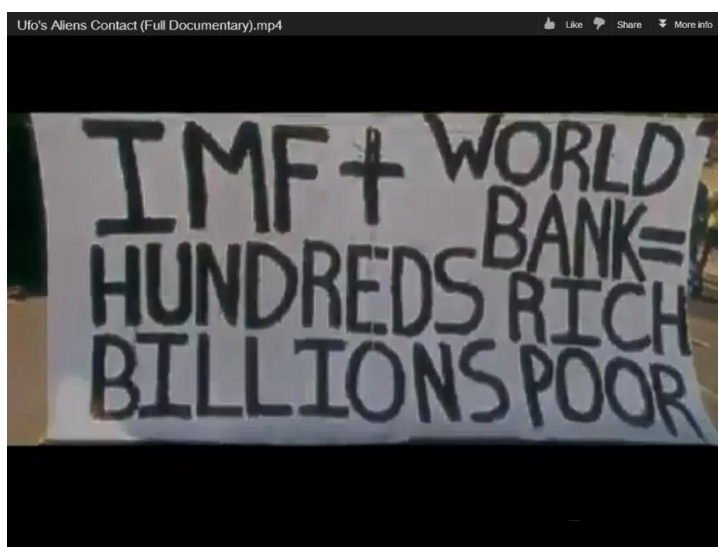
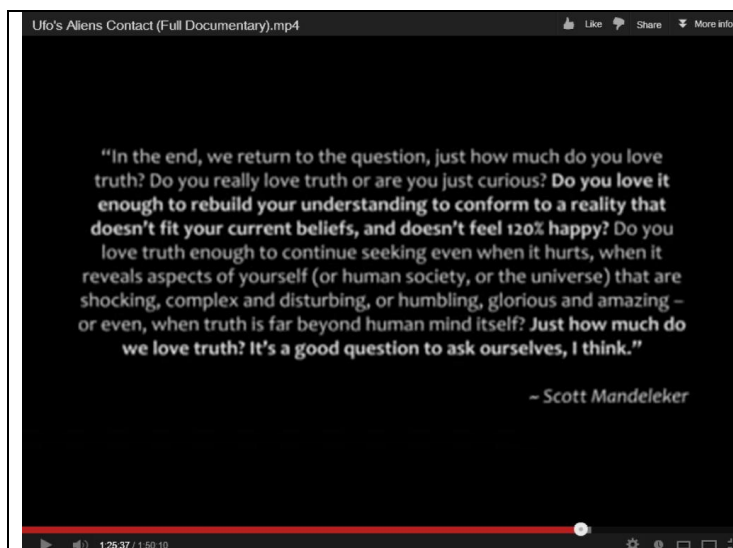


According to Egyptian sources, the alien mummy was discovered by Dr. Viktor Lubek a retired professor of the University of Pennsylvania.

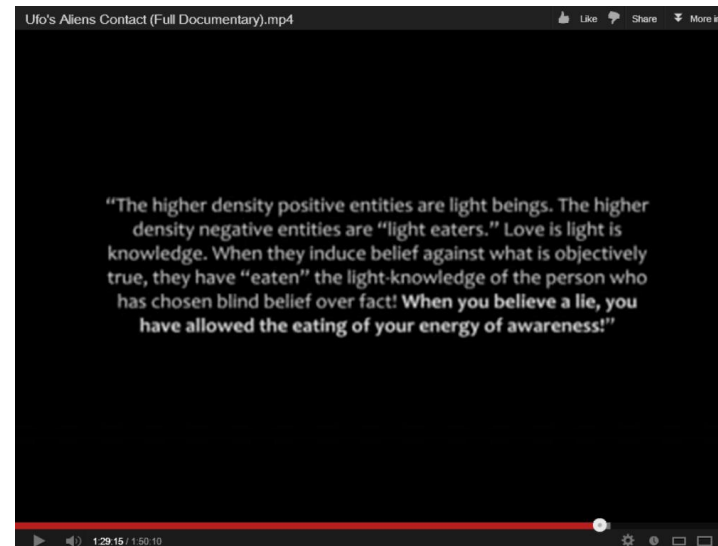
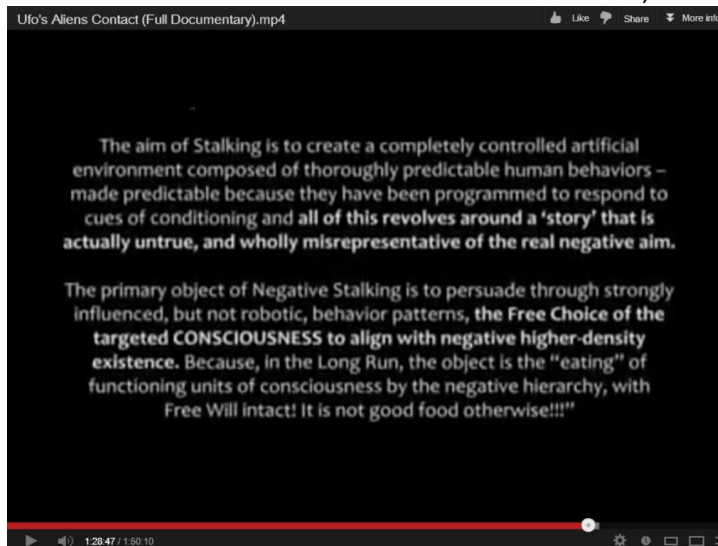
Archaeologist located the hidden compartment while conducting an investigation into a small pyramid south of the main pyramid, Senusret II, which contains the queen of the pharaoh.

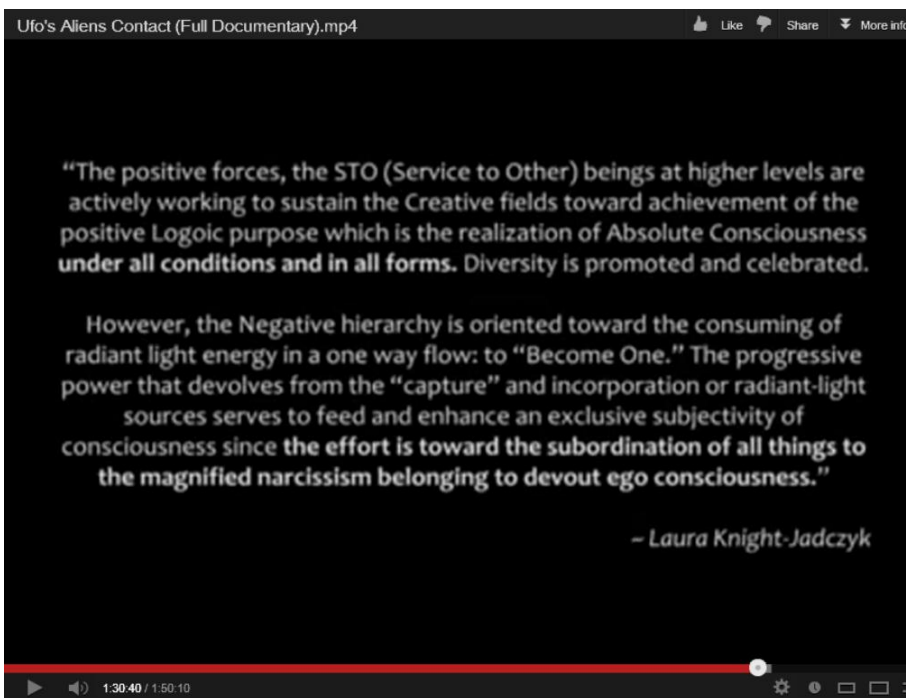
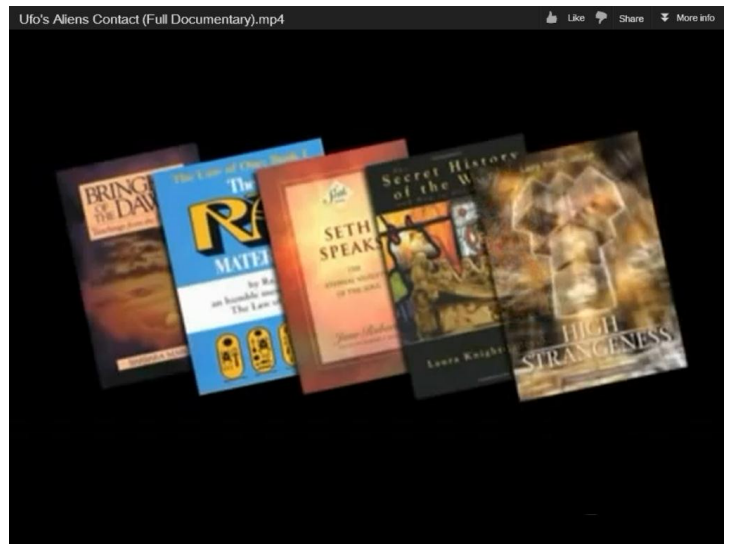
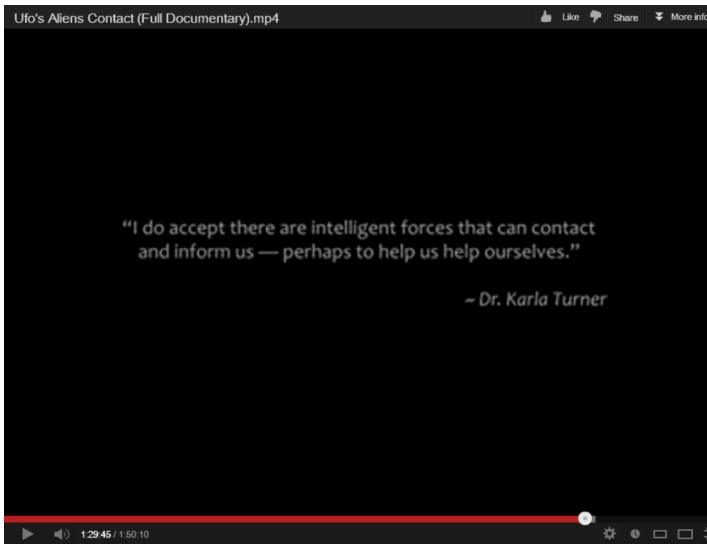
At the site they also found some gold and clay mixtures covering the body and traces of linen cloth, covering the enigmatic being.

ADG (UK)



THE PLACARD ON THE LEFT IS A WORLD WIDE SENTIMENT AND HIGHLY DOUBTFUL TO APPLY TO OTHER WORLDS. THIS IS A GOOD ILLUSTRATION OF WHERE WE STAND, OR HOW WE HAVE PROGRESSED AS A HUMAN RACE...





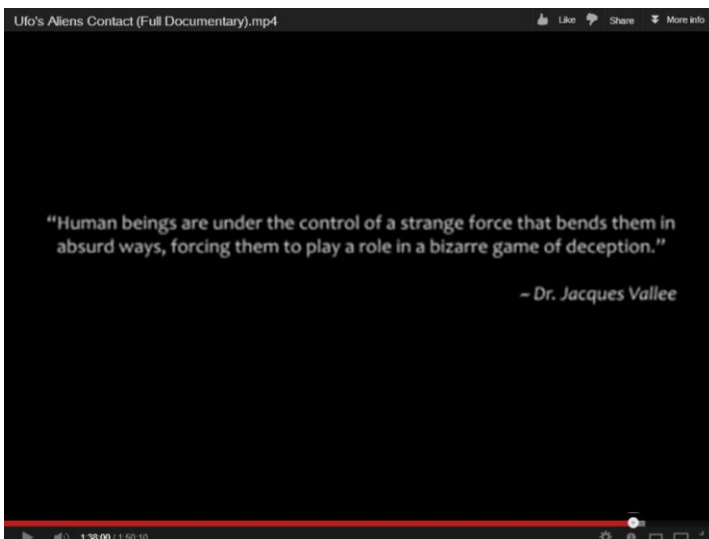
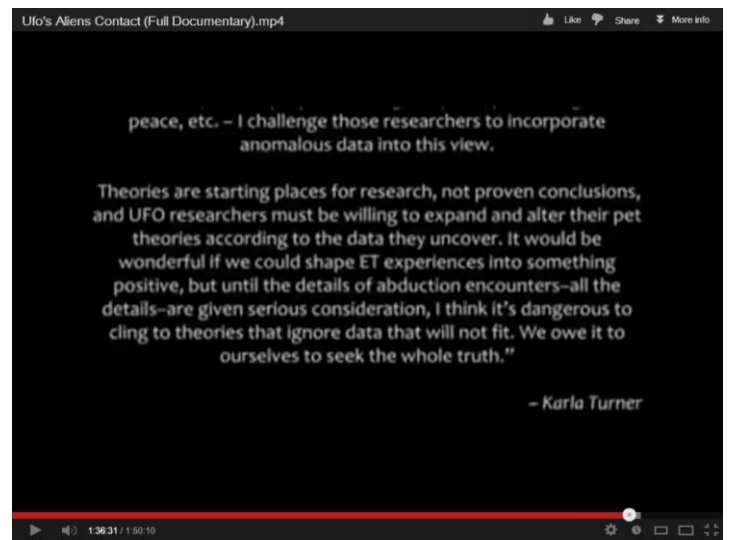
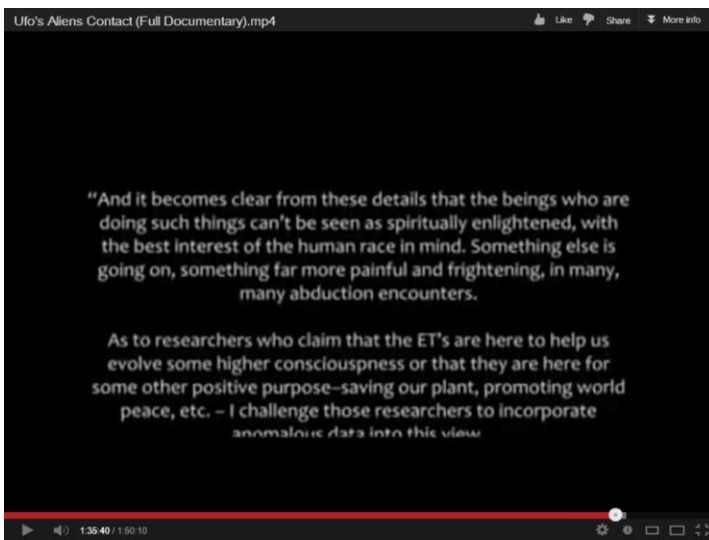
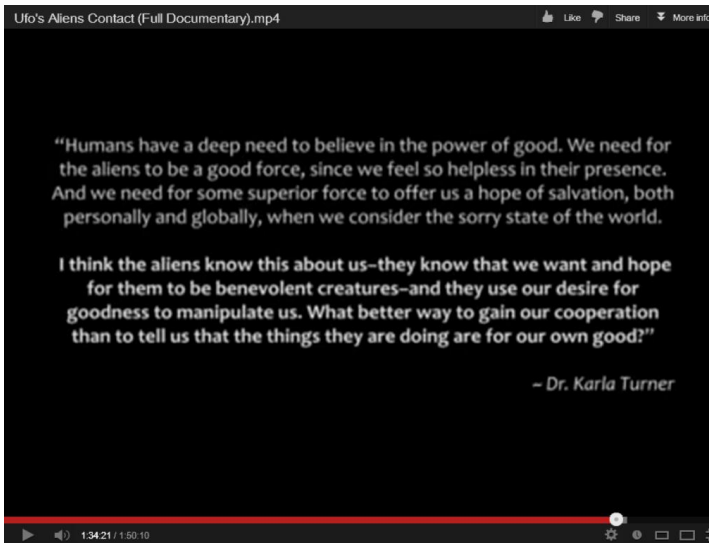
WAYNE HERSCHEL'S
HIDDEN RECORDS AS TOUTED BY HIM
"THE ONE" PRINCIPLE

OTHER-WISE KNOWN AS "ONEISM"

THIS TAKES US TO THE MANNAZ SKY
RUNE FOR ORION WHICH HAS AS ITS
MOTTO: "I-ME-the Id" The EGO

THE PLACEMENT OF BUILDINGS AT GIZA
IS IN THE CROSS OF CYGNUS
CONSTELLATION (JUST AS PHILIP
COPPENS SUGGESTS) – EVIDENCE OF
WHICH IS IN THE CARTOUCHE OF THE
"SILVER" PHARAOH PSUNNENES 1
SEE PAGE 1 OF THE PDF FORUM
NOSTRADAMUS & CHEMTRAILS at
www.hiddentextsofnostadamus.com



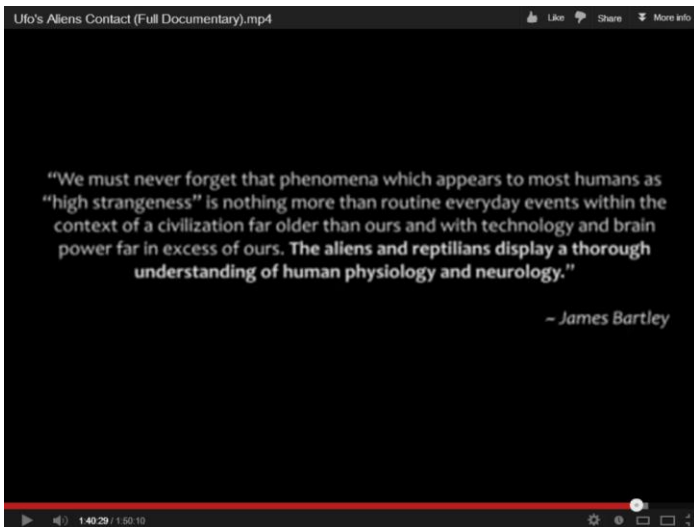
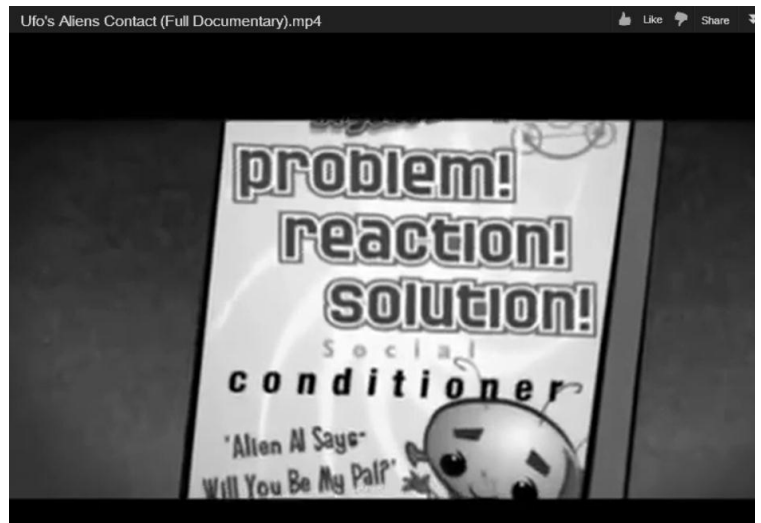
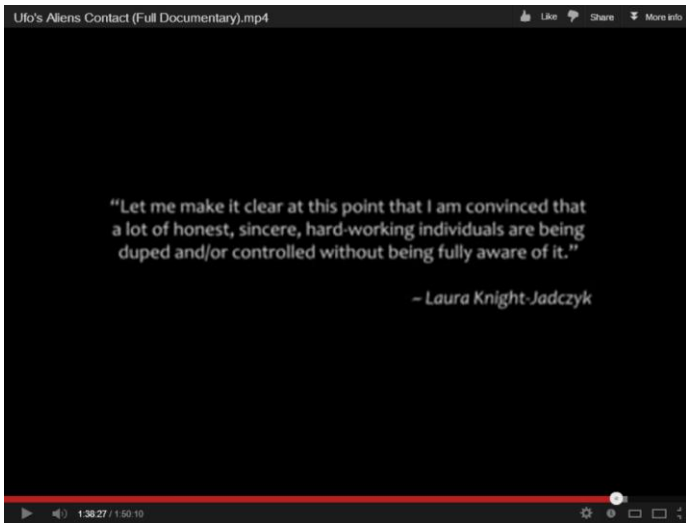


JACQUES VALLEE AUTHOR OF "WONDERS IN THE SKIES"

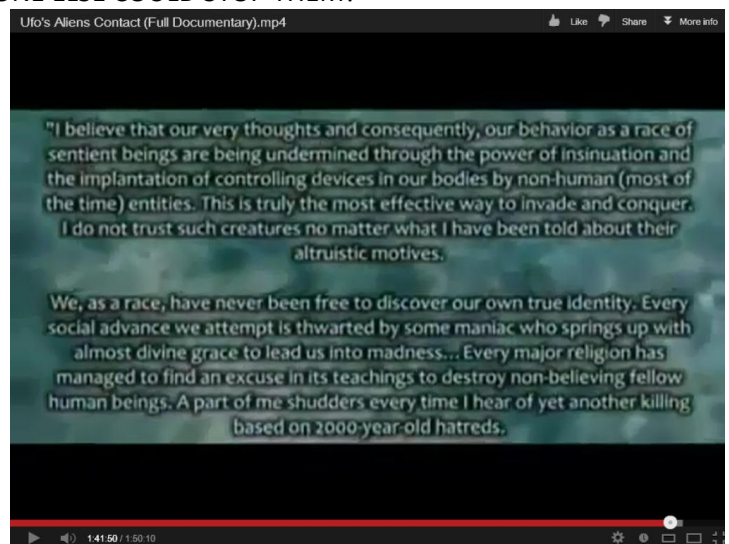
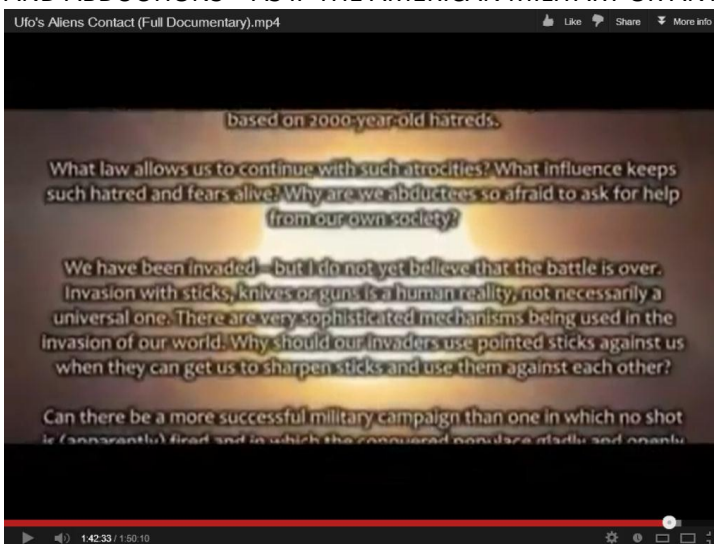
WHICH INCLUDES THE FULL REPORT OF AN AERIAL SIGHTING OF A "BRIGHT BURNING ROD" FEBRUARY 1ST 1554 AT 7 TO 8 PM SEEN BY OVER 1000 WITNESSES INCLUDING ONE MICHEL NOSTREDAME

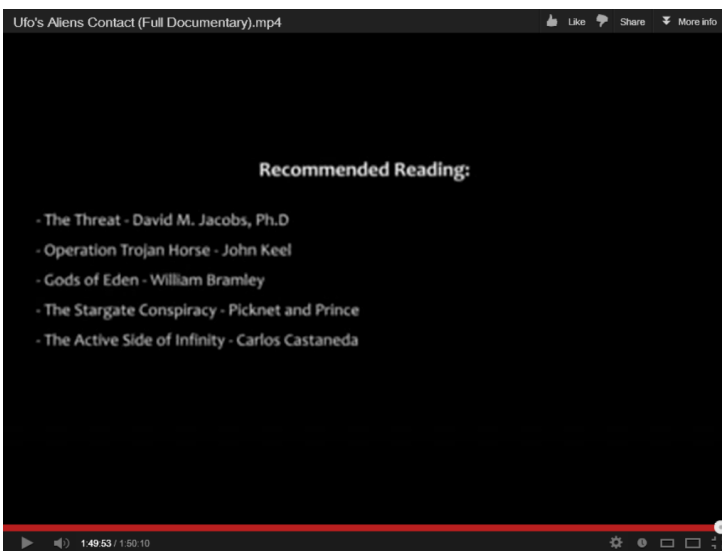
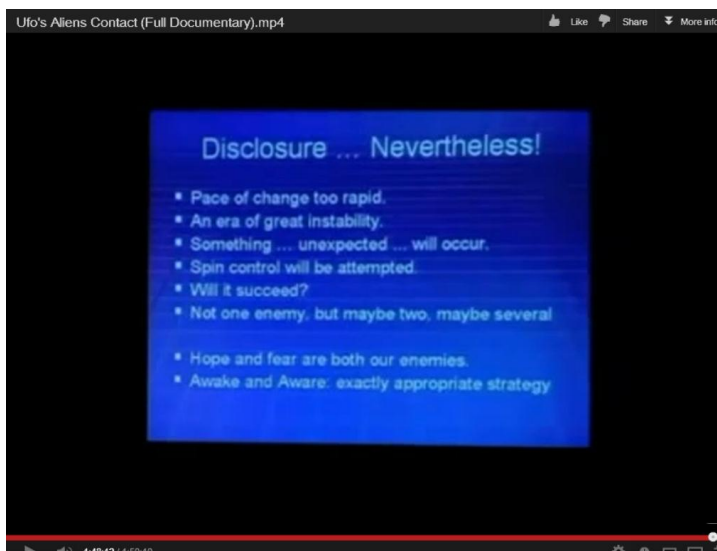
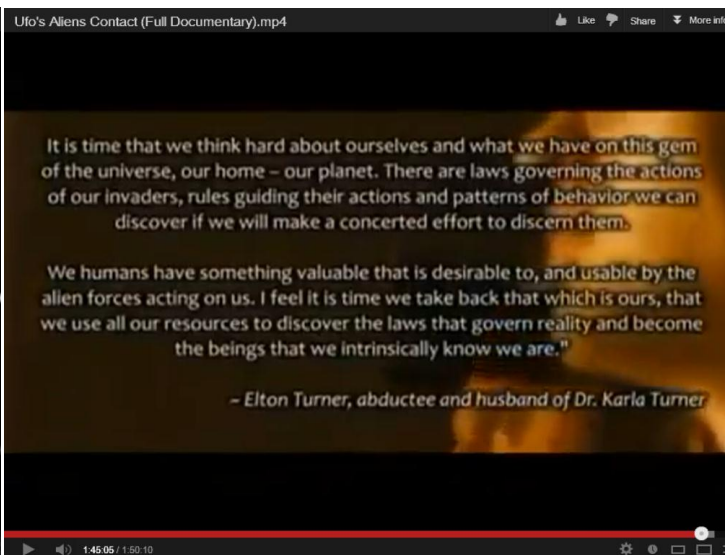
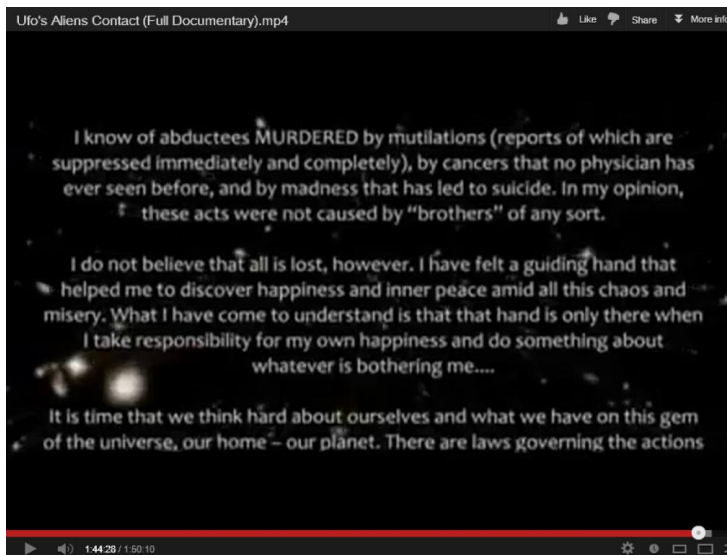
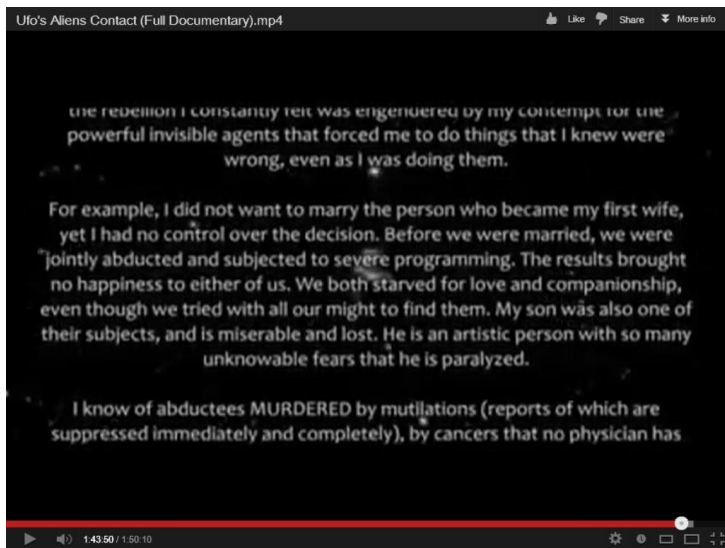
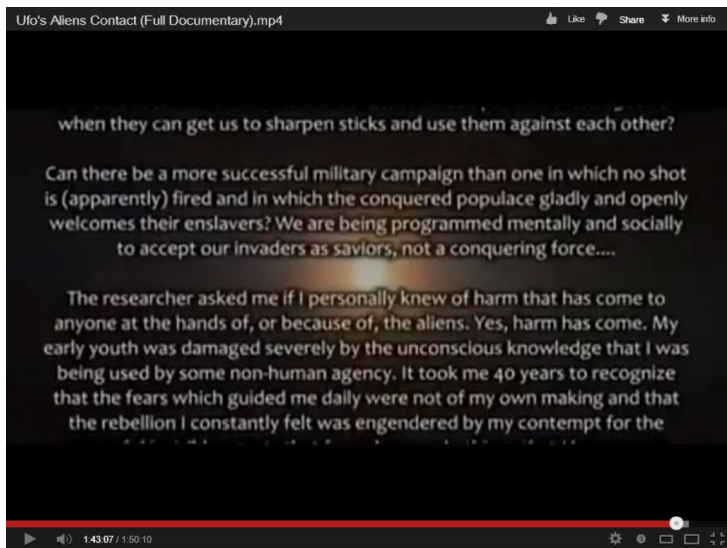
LORD TENDÉ THEN CALLED ON NOSTRADAMUS FOR A FULL WRITTEN REPORT, PROMPTLY PROVIDED MARCH 10 1554

EXACTLY ONE YEAR BEFORE THE PUBLICATION OF THE QUATRAINS



AL KAIDA IS THE MAIN STAR IN URSA MAJOR – THE VERY SAME GRAYLES [VERY TALL VERY SKINNY SILVERY GREYS] WITH WHICH THE AMERICAN MILITARY HAVE SIGNED TREATIES FOR TECHNOLOGY IN EXCHANGE FOR CATTLE MUTILATIONS AND ABDUCTIONS – AS IF THE AMERICAN MILITARY OR ANYONE ELSE COULD STOP THEM!





<http://www.youtube.com/TimeOfTransition>

<http://veilofreality.wordpress.com>